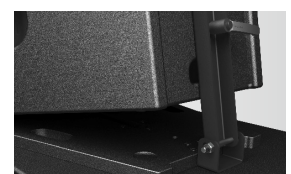
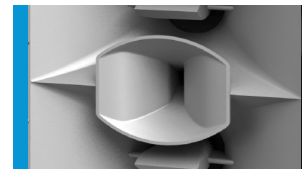




The PS 1 is a high-performance system for clubs, live applications, installations in sports arenas and amusement parks. Its unique twin-coaxial mid-high section provides a very precise and even dispersion pattern of 80° x 40°. All three sources virtually merge into a single one, resulting in an excellent spatial resolution. Two 12-inch woofers extend its frequency range down to 75 Hz. The three-way design offers impressive dynamic headroom with minimal distortions and coloration. Thanks to the integrated crossover network, only two amplifier channels are required. Colors of horn flares, grilles and enclosures can be customized to suit the needs of architects and designers.

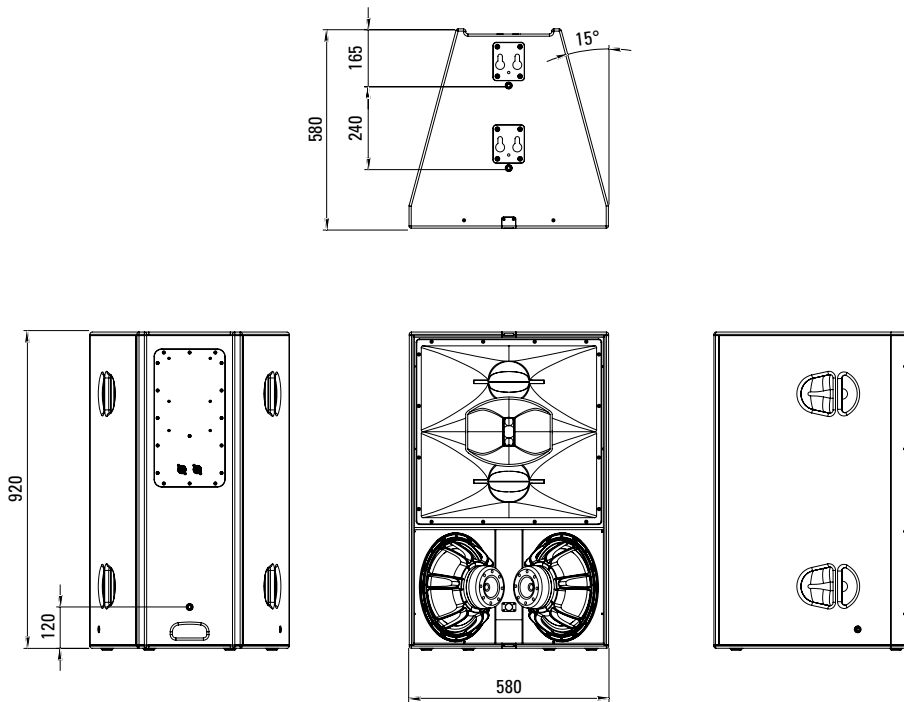
PRODUCT SPECIFICATIONS

Speaker Components	2 x 12" / 2 x 6,5" / 1,4" (3" VC)
Description	High Impact Point Source
Power AES / Peak	LF: 1500 W / 4500 W MHF: 300 W / 900 W
Impedance nominal	LF: 4 Ω / MHF: 16 Ω
SPL 1 W / Peak @ 1 m	LF: 101 dB / 138 dB MHF: 108 dB / 138 dB
Usable Range	75 Hz - 20 kHz (-6 dB)
Tuning Frequency Excursion minimum	80 Hz
X - Overpoint acoustical	300 Hz / 1,3 kHz
Coverage horizontal / vertical	80° x 40°
Enclosure Wedge Angle	30°
Connectors	2 x Speakon NL4 in/out Coding: 1 +/- MHF, 2 +/- LF
Handles	5 x
Rigging / Fittings	Cradle plates on top side, tilt bar connection on back side
Weight	54 kg
Size height x width x depth	92,0 x 58,0 x 58,0 cm
Order No.	00780



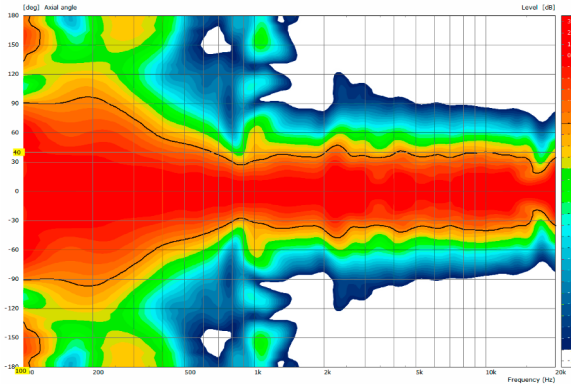
Stacking Board

DIMENSIONS

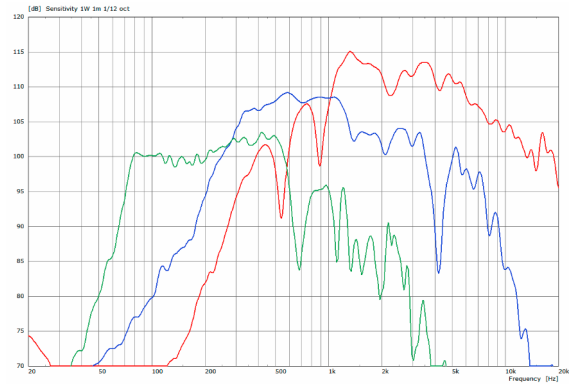


MEASUREMENTS

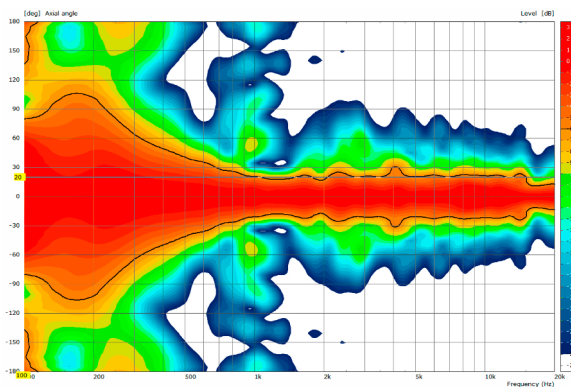
PS 1 - 2D Directivity Plot - horizontal



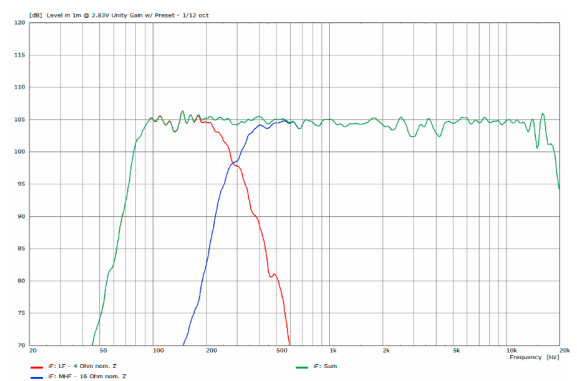
PS 1 - Sensitivity each way @ 1 W nominal input



PS 1 - 2D Directivity Plot - vertical



PS 1 - Frequency Response with 2-way preset

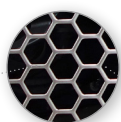


PS 1 - Base Model

- Cabinet finish in black Polyurea coating
- Horn Flare finish in matt RAL 7004 signal grey
- Low-frequency section grille with wide-meshed hexagonal perforation, brushed stainless steel finish

> Optional:

- Powder coating in RAL color of choice



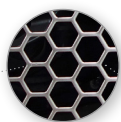
Wide-meshed
hexagonal grille

PS 1 - Full Grille Option

- Grille with wide-meshed hexagonal perforation, brushed stainless steel finish

> Optional:

- Powder coating in RAL color of choice
- Fine-meshed perforation and black foam on inside / without foam



Wide-meshed
hexagonal grille



Fine-meshed
hexagonal grille
With foam on inside



Without foam

PS 1 - Flare Color Option

- Complete horn flare painted in RAL color of choice

> Optional:

- Finish in matt, silk-matt, glossy, metallic, effects, etc. on request



ACCESSORIES PS 1

Flying Cradle



tool-free snap-in assembly,
incl. accessories
(1 x load adapter M10,
1 x ball lock pin 8 x 25 mm)
Order No. **01356**

Stacking Board



fits: PS Sub,
incl. accessories (1 x handle screw
M10 x 20)
Order No. **01395**

Ball Lock Pin



for PS 1
Order No. **01380/8x25** (8 x 25 mm)

Handle Screw



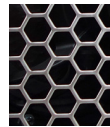
adjustable,
M10 x 20
Order No. **08375/20**

Load Adapter M10

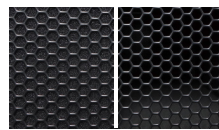


for Galeo C - Galeo C Sub - PS 1 -
C 15 - C 30 flying frame / flying cradle
Order No. **01328**

Full Grille Option



Grille with wide-meshed
hexagonal perforation
> brushed stainless steel finish
Order No. **97290/stainless steel**

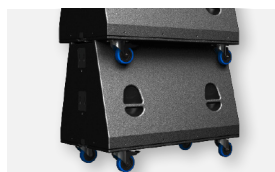


Grille with fine-meshed
hexagonal perforation
> with foam on inside
Order No. **97290/black/foam**
> without foam
Order No. **97290/black**

Wheel Board



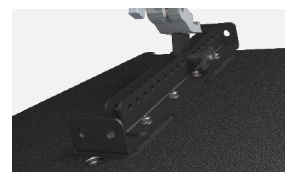
for PS 1
Order No. **01264/PS1**



Wheel Board



Stacking Board



Flying Cradle