



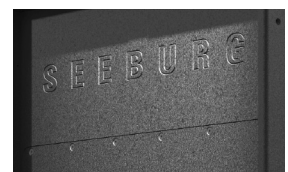
High-performance subwoofer for the PS series horn systems and universal use. The PS Sub works with a novel and sophisticated loading principle, which, in addition to a wide usable frequency range, provides a high degree of efficiency and an unusually precise and clear reproduction from 28 Hz up. The 21-inch neodymium driver with 4.5-inch long-stroke coil is cooled very effectively by the design of the enclosure and can therefore process high continuous power for hours.

PRODUCT SPECIFICATIONS

| | |
|---|--|
| Speaker Components | 1 x 21" (4,5" VC) |
| Description | High Impact Subwoofer |
| Power AES / Peak | LF: 1500 W / 4500 W |
| Impedance nominal | LF: 8 Ω |
| SPL 1 W / Peak @ 1 m | LF: 104 dB / 141 dB |
| Usable Range | 28 Hz - 160 Hz (-6 dB) |
| Tuning Frequency excursion minimum | 33 Hz |
| X-Overpoint acoustical | depends on preset |
| Coverage horizontal x vertical | omnidirectional |
| Connectors | 3 x Speakon NL4 in/out Coding: 1+/- thru, 2+/- LF |
| Handles | 8 x |
| Rigging / Fittings | 2 x M20 pole plate |
| Weight | 74 kg |
| Size height x width x depth | 98,0 x 58,0 x 98,0 cm |
| Order No. | 00790 |



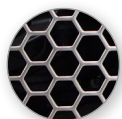
Stacking Board.



CUSTOMIZATION

PS Sub - Base Model

- Cabinet finish in black Polyurea coating
- Driver protection with wide-meshed hexagonal grille, brushed stainless steel finish



Wide-meshed hexagonal grille

PS Sub - Partial Grille Option

- Horn exit with wide-meshed hexagonal grille, brushed stainless steel finish

> Optional:

- Powder coating in RAL color of choice

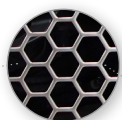


PS Sub - Full Grille Option

- Complete front with wide-meshed hexagonal grille, brushed stainless steel finish

> Optional:

- Powder coating in RAL color of choice
- Fine-meshed perforation and black foam on inside / without foam



Wide-meshed hexagonal grille



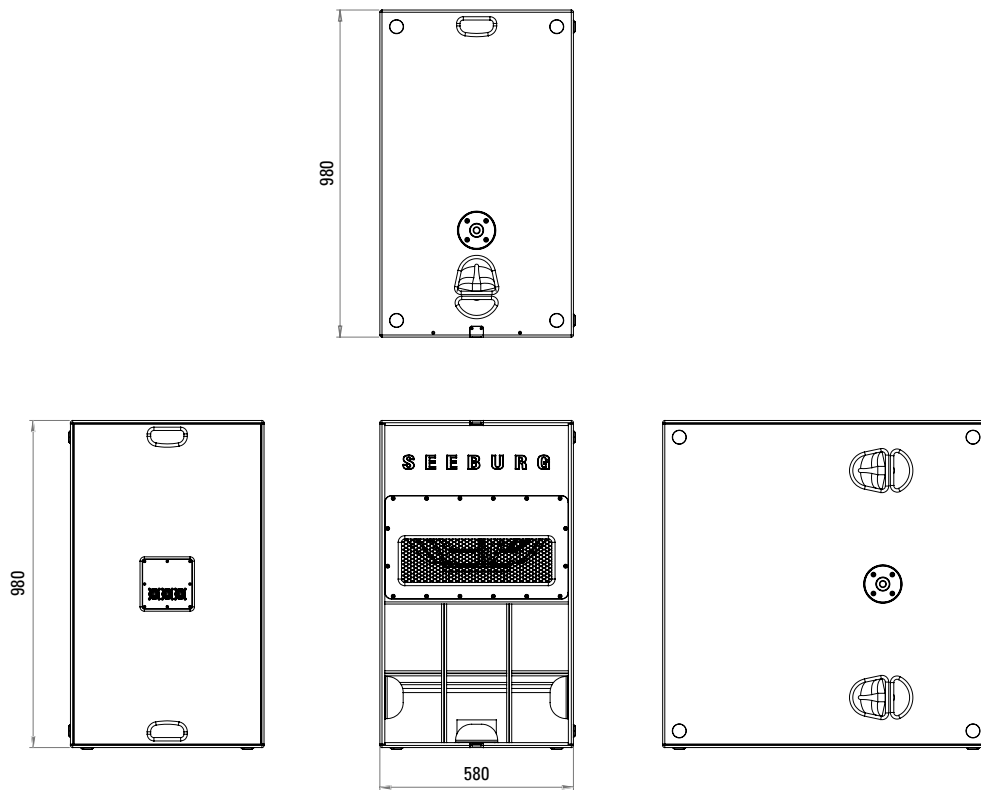
Fine-meshed hexagonal grille

With foam on inside



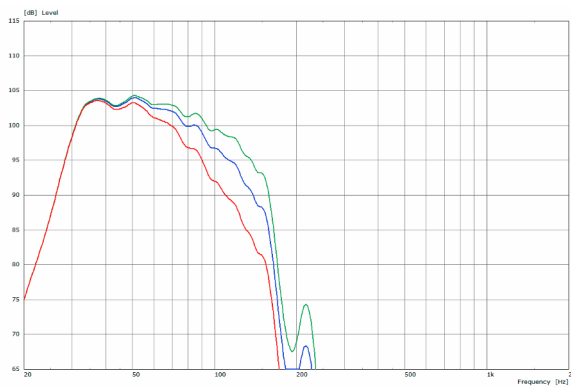
Without foam

DIMENSIONS

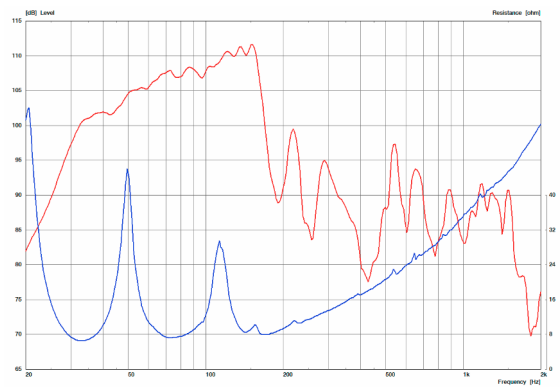


MEASUREMENTS

PS Sub - Frequency Response with Presets



PS Sub - Sensitivity 1 W @ 1m + Impedance



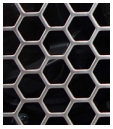
ACCESSORIES PS Sub

Partial Grille Option

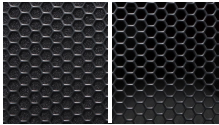


Grille with wide-meshed hexagonal perforation for the low-frequency section
> brushed stainless steel finish
Order No. **97280/stainless steel**

Full Grille Option



Grille with wide-meshed hexagonal perforation
> brushed stainless steel finish
Order No. **97283/stainless steel**



Grille with fine-meshed hexagonal perforation
> with foam on inside
Order No. **97283/black/foam**
> without foam
Order No. **97283/black**

Stacking Board

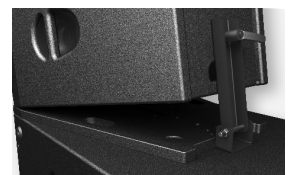


fits: PS 1 > PS Sub,
incl. accessories (1 x handle screw M10 x 20)
Order No. **01395**

Wheel Board



for PS Sub
Order No. **01264/PS Sub**



Stacking Board